

Set Up Your Computer First

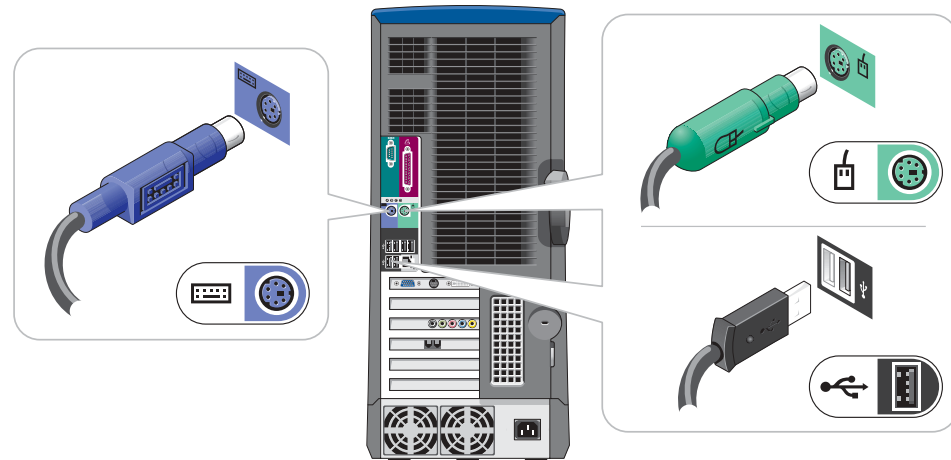
XPS



CAUTION:

Before you set up and operate your Dell™ computer, read and follow the safety instructions in your Product Information Guide.

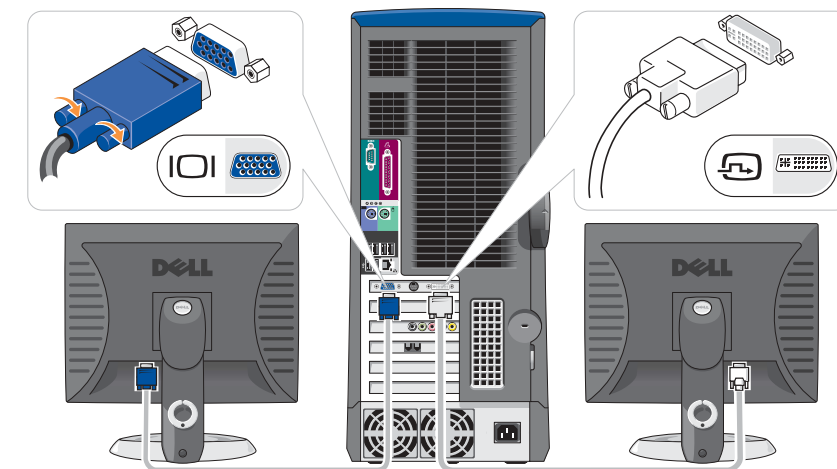
1



NOTE: If you ordered the Microsoft® Windows® XP Media Center Edition operating system, connect the components as described in the Media Center setup instructions that came with your computer.

Connect a keyboard and a mouse.

2

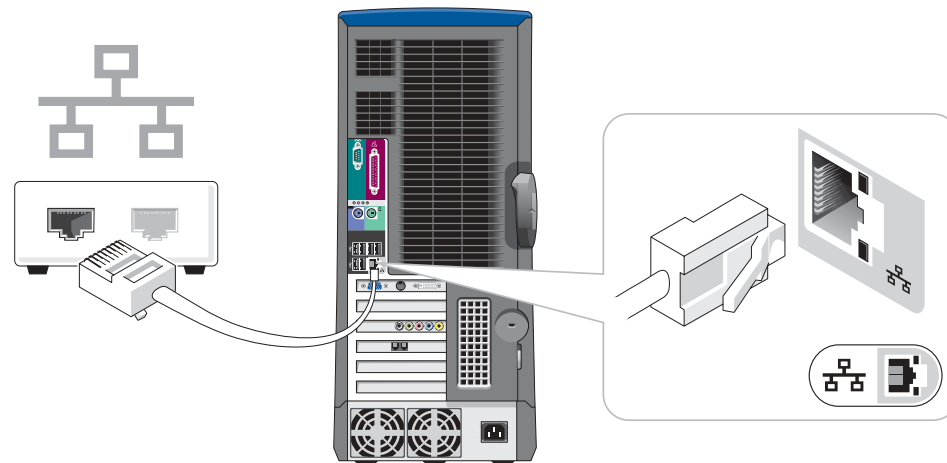


NOTE: If you purchased a Dell TV and would like to use it as your monitor, see the setup instructions that came with the TV.

Connect one monitor.

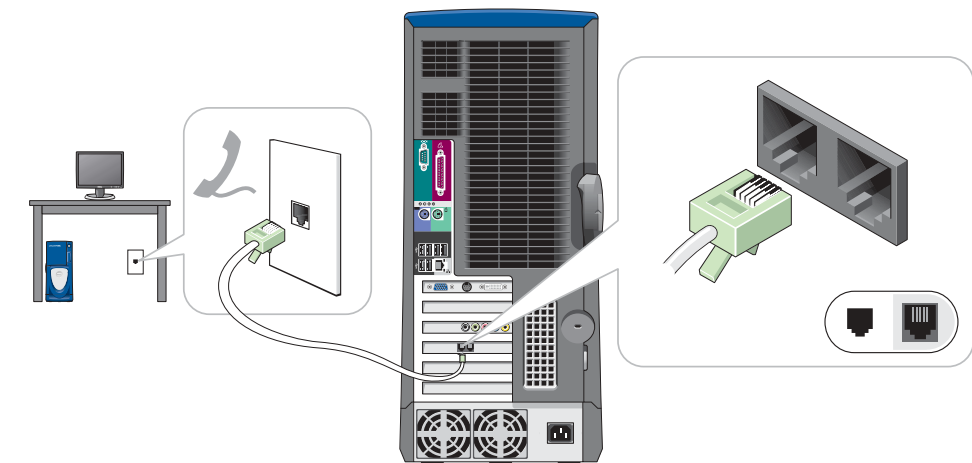
If your monitor has a DVI connector, plug it into the DVI connector on the computer. If your monitor has a VGA connector, plug it into the VGA connector on the computer. If your monitor has both a DVI and a VGA connector, plug only the DVI connector into the computer.

3



If you have a network device, connect a network cable (not included) to the network connector.

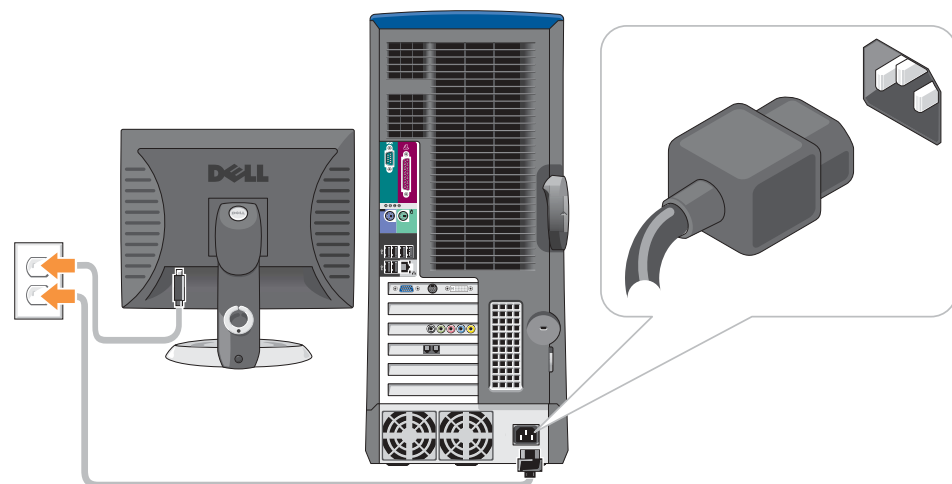
4



NOTE: Not all modems have two connectors.

If you have a modem, connect a telephone cable to either of the modem connectors. Do not connect the telephone cable to the network connector.

5



Connect the computer and monitor to electrical outlets.

6



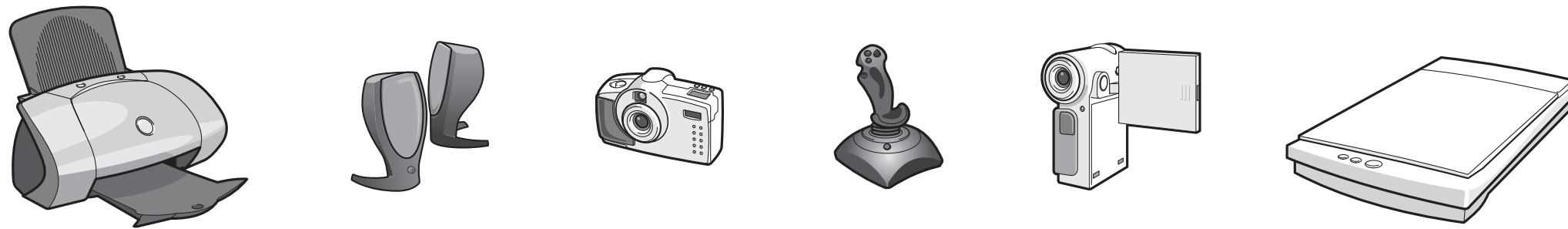
Turn on the computer and monitor.



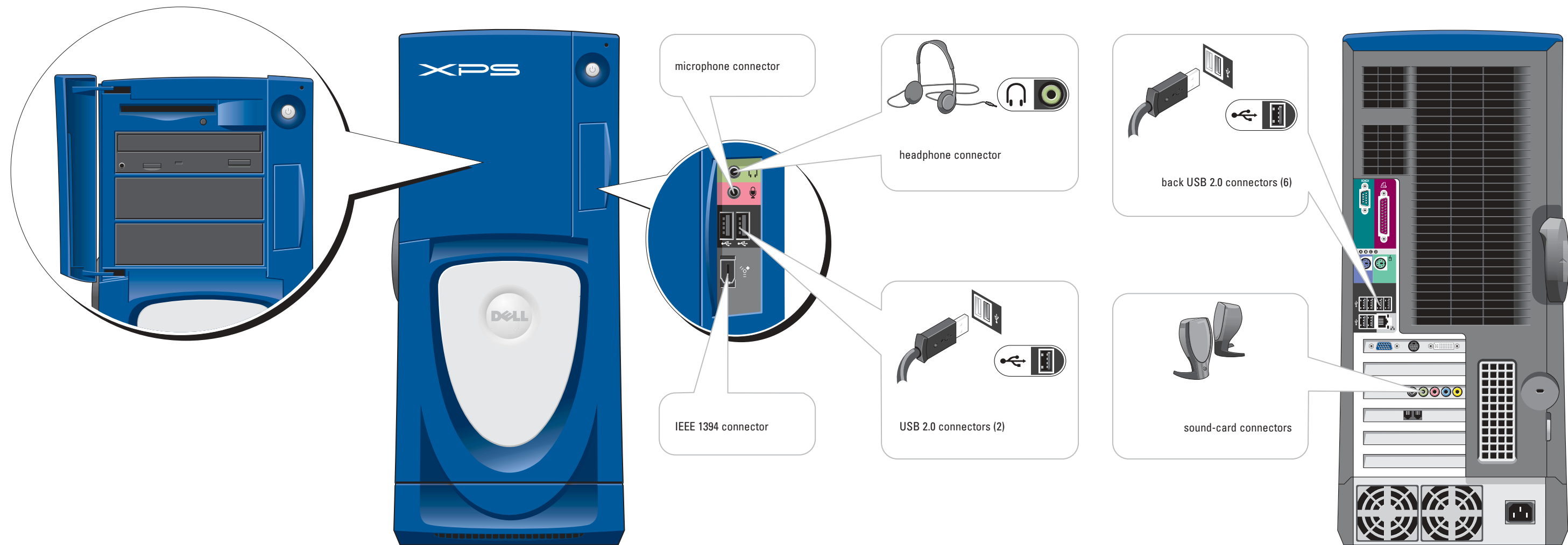
0J3183A00



Set Up Other Devices Last



Connect other devices according to their documentation.



Help and Support



See your *Owner's Manual* for additional information on setting up, using, and troubleshooting your computer.

To access support and educational tools, double-click the **Dell Solution Center** icon on the Microsoft Windows desktop. You can also access Dell through support.dell.com.

For additional information about your computer, click the **Start** button and click **Help and Support**:

- To access the *Dell™ Dimension™ Help* file, click **User and system guides**, click **User's guides**, and then click **Dell Dimension Help**.
- For help with the Windows operating system, click **Microsoft Windows XP Tips**.

Information in this document is subject to change without notice.
© 2004 Dell Inc. All rights reserved.

Reproduction in any manner whatsoever without the written permission of Dell Inc. is strictly forbidden.

Dell, the DELL logo, and Dimension are trademarks of Dell Inc.; Microsoft and Windows are registered trademarks of Microsoft Corporation. Dell disclaims proprietary interest in the marks and names of others.

April 2004

